

Spherical Dogbone Mount, 8S Audi TT RS &  
8V Audi RS3

**034 MOTORSPORT**

034Motorsport's Spherical Dogbone Mount and Upper Mount Insert for 8S Audi TT RS & 8V Audi RS3 is the new standard in performance and durability. This dogbone mount was engineered with performance in mind, manufactured from billet aluminum, and features a genuine Aurora Spherical Bearing to maintain proper articulation and reduce NVH transfer.

**Installation Spiciness Rating: MILD**



Installation of your 034Motorsport Spherical Dogbone Mount is a straightforward process that will take approximately 1 hour to complete.

**Required Parts:**

- **034Motorsport Billet Aluminum MQB Dogbone Mount Insert (Part number 034-MQB-DBMI or equivalent) is required for this installation.**

**Supplied Parts:**

- 034 Spherical MQB Dogbone Mount
- 034 Dogbone Mount Upper Insert
- OEM Replacement Bolts (3)

**Tools Needed:**

- 21mm Socket
- 18mm Socket
- 13mm Socket
- T45 Torx Bit
- T25 Torx Bit
- Pry Bar
- Torque Wrench

About This Guide

This Install Guide documents the installation process on an 8S Audi TTRS. There may be minor differences depending on specific vehicle, market, options, etc.

## Getting Started

Confirm you have received all the parts included with your purchase by reading the complete guide, if there are missing components, please contact:

[customerservice@034motorsport.com](mailto:customerservice@034motorsport.com)

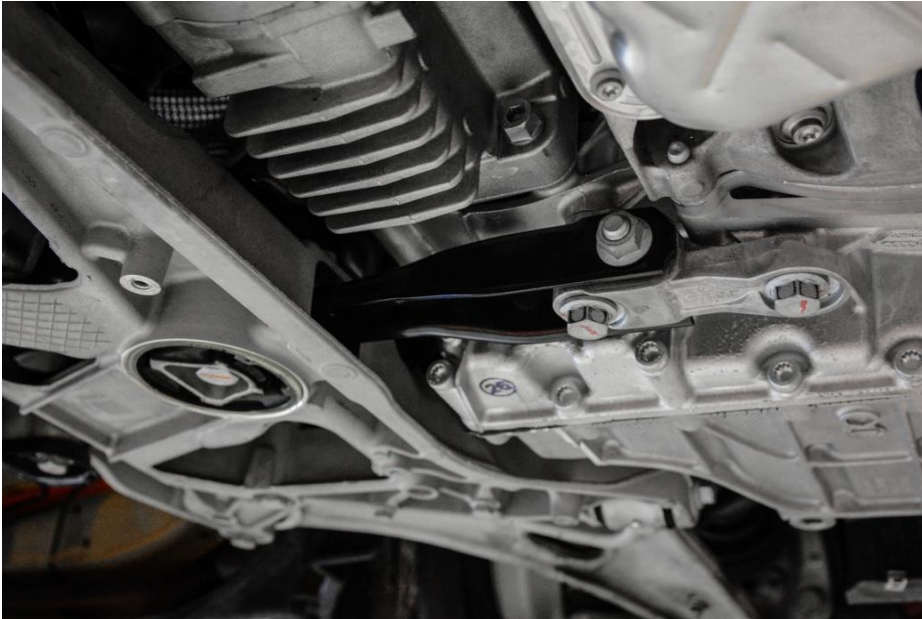
## Install Steps

### **Step 1**

Lift the car.

### **Step 2**

Locate the factory dogbone mount securing the engine/transmission to the front subframe. It is located under the belly pan. You will need the T25 and T45 Torx to remove the belly pan.



### **Step 3**

Using a 21mm Socket, remove the bolt securing the factory dogbone mount to the front subframe.



### **Step 4 (Optional)**

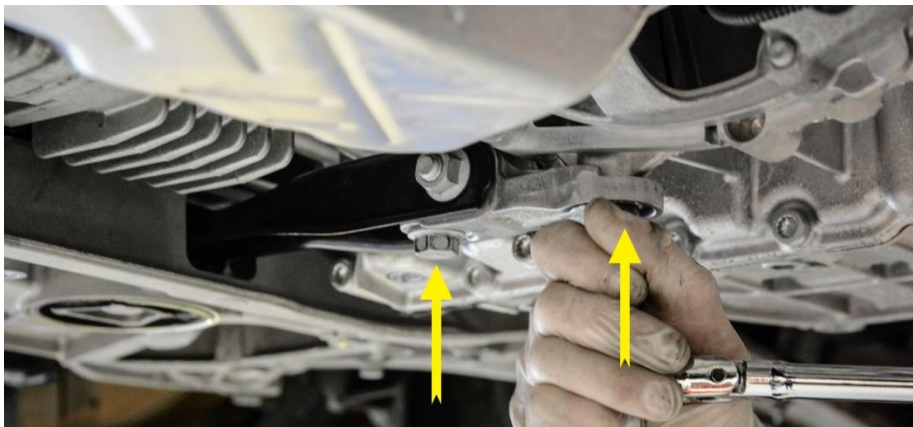
Using a Flathead screwdriver, remove the dogbone mount insert if one has been installed previously. The lower dogbone mount insert is required with this product.





**Step 5**

Using an 18mm socket, remove the two bolts securing the factory dogbone mount to the transmission.

**Step 6**

Remove the factory dogbone mount from the vehicle by sliding forward and out of the front subframe.

**Step 7**

Remove the four M8 sway bar mounting bolts.

**Step 8**

Apply a light coating of grease on the 034-509-1035 MQB Upper Dogbone Mount Insert.





**Step 9**

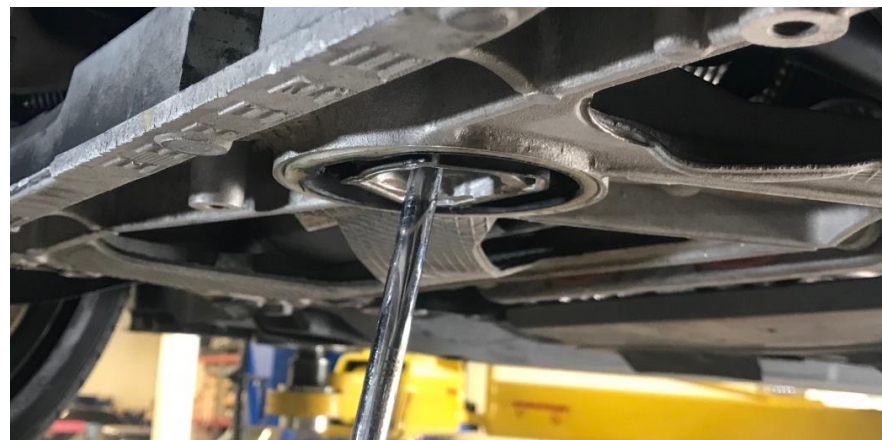
Lift the sway bar up and back to provide room to insert the insert.

**Step 10**

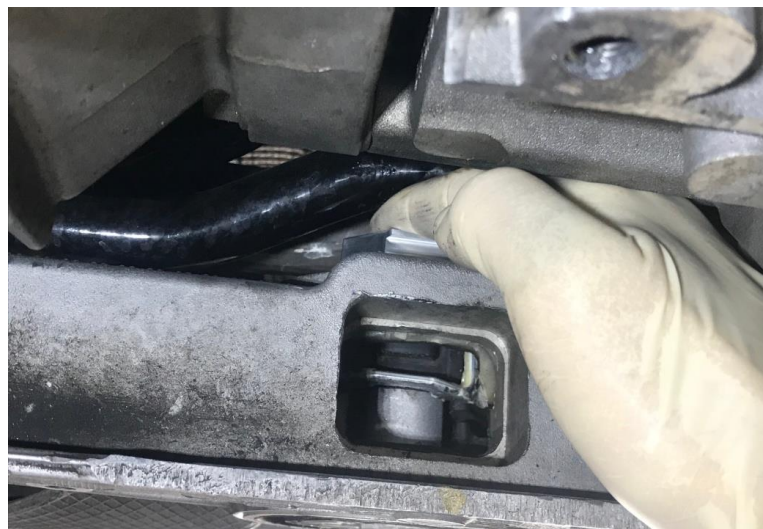
Position the upper insert in the front void of the upper bushing to prepare to install.

**Step 11**

Insert a large/long screw driver into the puck bolt hole and gently pry the upper bushing back to give room to insert the upper insert.

**Step 12**

While the upper puck is pried back, push down on the insert to fully seat it into position.





## Step 13

This is how the insert should be positioned when fully inserted. The pendulum arm window should be unobstructed.



## Step 14

Reinstall the sway bar mounting bolts and torque to **28Nm**.



## Step 15

Apply a coat of grease to the tail end of the 034 Spherical Dogbone Mount to ease installation into the rubber bushing.



## Step 16

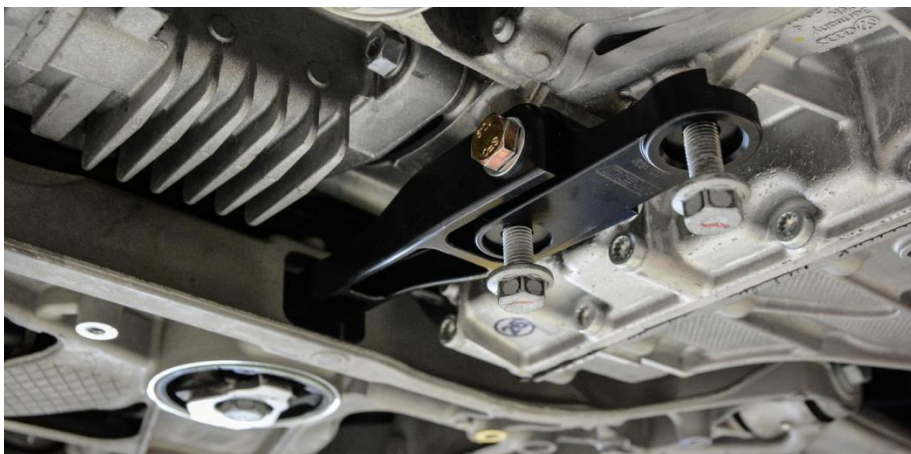
Insert the tail end of the 034 Spherical Dogbone Mount into the front subframe and align front holes with those on the transmission.





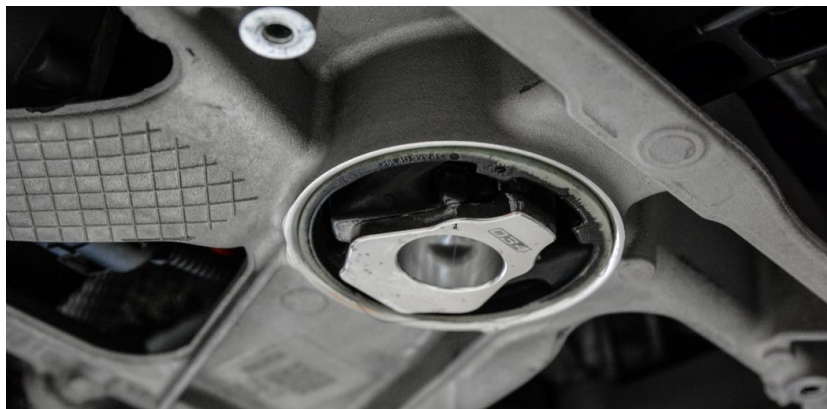
## Step 17

Loosely install the front two bolts securing the 034 Spherical Dogbone Mount to the transmission using the new supplied factory bolts.



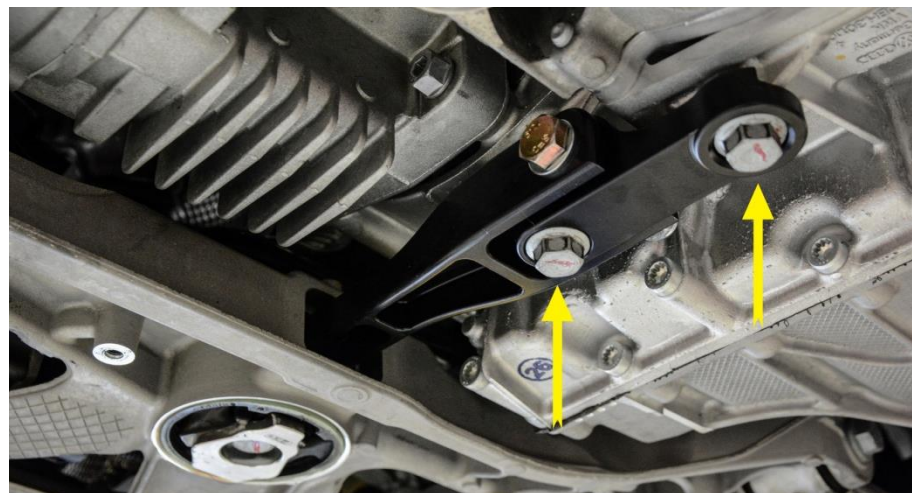
## Step 18

Reinstall Dogbone Mount Insert. Use a spare hand to move engine/transmission and align bolt hole in the front subframe with the 034 Spherical Dogbone Mount. Loosely install the new factory bolt supplied in the kit.



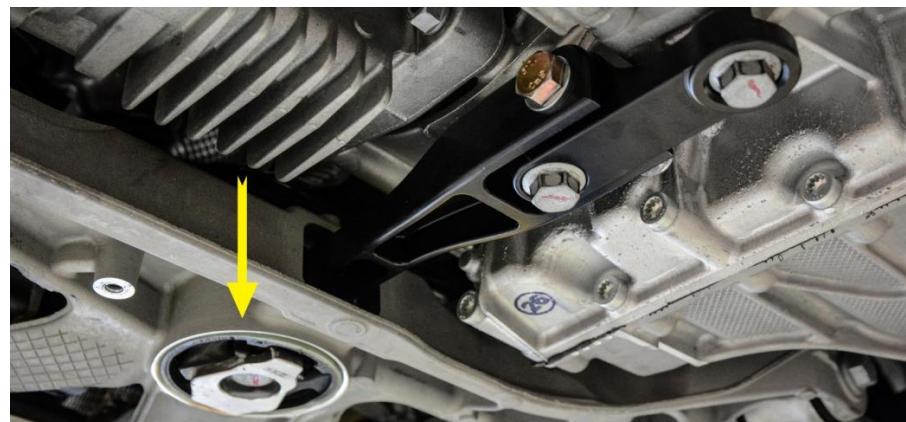
## Step 19

Using an 18mm socket, torque the 2 supplied bolts securing the 034 Spherical Dogbone Mount to the engine/transmission to **50 Nm + 90°**.



## Step 20

Using a 21mm socket, torque the new factory bolt securing the 034Motorsport Billet + Spherical Dogbone Mount to the front subframe to **130 Nm + 90°**.



**Step 21**

Reinstall the belly pan using T25 and T45 Torx bolts. Torque T45 Torx bolts to **23Nm**.

**Step 22**

Lower your vehicle.

**Step 23**

Enjoy the upgrade!

