

Billet Upper Dogbone Insert, MKV/MKVI VOLKSWAGEN GOLF/JETTA/GTI/GLI & 8J/8P AUDI TT/A3



Lower Dogbone Mount Insert Spacer



Upper Dogbone Mount Insert



034Motorsport's Billet Upper Dogbone Mount Insert for 8V/8S Audi A3/S3/RS3/TT/TTS/TTRS & MkVII Volkswagen Golf/GTI/R is the new standard in performance and durability. This dogbone insert set was engineered with performance in mind, manufactured from billet aluminum to maintain proper articulation and provide longevity.

Installation Spiciness Rating: MILD



Installation of your 034Motorsport Upper Dogbone Insert Set is a straightforward process that will take approximately 1 hour to complete.

Required Parts:

- **034Motorsport Billet Aluminum Dogbone Mount Lower Insert (Part number 034-509-1021 or equivalent) is required for this installation.**

Supplied Parts:

- 034 Dogbone Mount Upper Insert
- 034 Dogbone Mount Lower Insert Spacer

Tools Needed:

- 21mm Socket
- 16mm Socket
- T45 Torx Bit
- T25 Torx Bit
- Pry Bar
- Torque Wrench

Getting Started

Confirm you have received all the parts included with your purchase by reading the complete guide, if there are missing components, please contact:

customerservice@034motorsport.com

About This Guide

This Install Guide documents the installation process on an 8V Audi S3. There may be minor differences depending on specific vehicle, market, options, etc.

Install Steps

Step 1

Lift the car.

Step 2

Locate the factory dogbone mount securing the engine/transmission to the front subframe. It is located under the belly pan. You will need the T25 and T45 Torx to remove the belly pan.



Step 3

Using a 21mm Socket, remove the bolt securing the factory dogbone mount to the front subframe.



Step 4 (Optional)

Using a Flathead screwdriver, remove the dogbone mount insert if one has been installed previously. The lower dogbone mount insert is required with this product.



Step 5

Using an 16mm socket, remove the two bolts securing the factory dogbone mount to the transmission.

**Step 6**

Remove the factory dogbone mount from the vehicle by sliding forward and out of the front subframe.



If you have the lower dogbone mount insert, remove that as well

Step 7

Apply a light coating of grease on the 034-509-1035 MQB Upper Dogbone Mount Insert.

**Step 8**

Orientate the insert this way.



Step 9

Press insert straight up into mount, in the front void space.

**Step 10**

Press insert fully into mount.

**Step 11**

Using your thumb, press insert up into upper portion of the mount.

**Step 12**

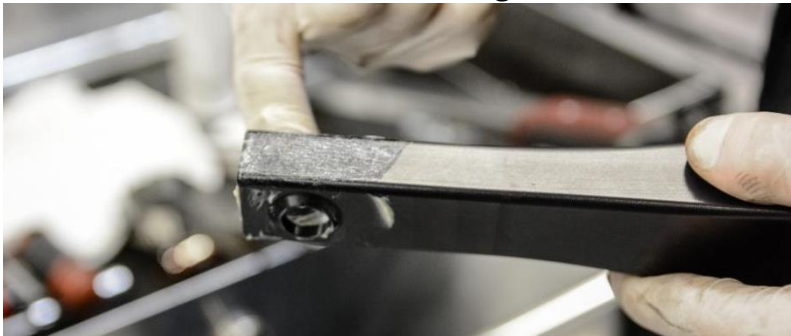
This is how the insert should be positioned when fully inserted. The pendulum arm window should be unobstructed.



Note: steps 12-17 show the 034Motorsport Billet + Spherical Dogbone Mount being installed. If you are reinstalling the stock dogbone, it will be the same steps.

Step 13

Apply a coat of grease to the tail end of the 034Motorsport Billet + Spherical Dogbone Mount to ease installation into the rubber bushing.



Step 14

Insert the tail end of the 034Motorsport Billet + Spherical Dogbone Mount into the front subframe and align front holes with those on the transmission.



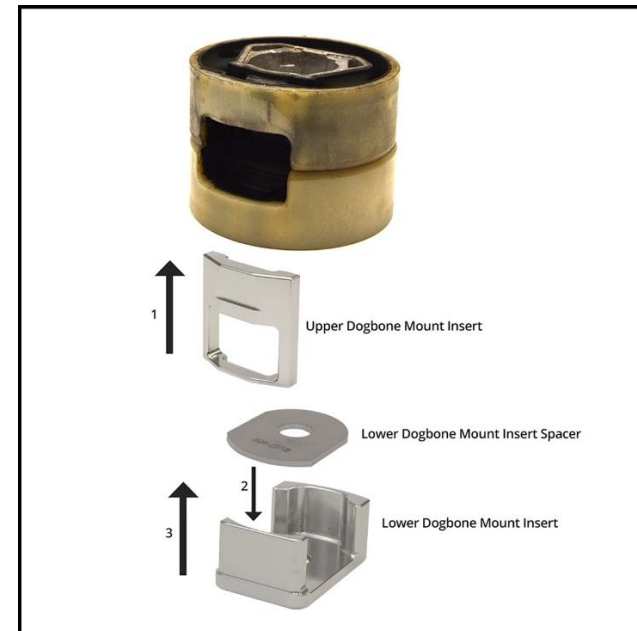
Step 15

Loosely install the front two bolts securing the 034Motorsport Billet + Spherical Dogbone Mount to the transmission using the new supplied factory bolts.



Step 16

Add the lower dogbone mount spacer to the lower dogbone mount insert. Install the assembly into the dogbone pucks.



Step 17

Using a 16mm socket, torque the 2 new factory bolts securing the 034Motorsport Billet + Spherical Dogbone Mount to the engine/transmission to **50 Nm + 90°**.



Step 18

Using a 21mm socket, torque the new factory bolt securing the 034Motorsport Billet + Spherical Dogbone Mount to the front subframe to **130 Nm + 90°**.



Step 19

Reinstall the belly pan using T25 and T45 Torx bolts. Torque T45 Torx bolts to **23Nm**.

Step 20

Lower your vehicle.

Step 21

Enjoy the upgrade!

