

E9X BMW M Dynamic+ Front End Links

**034 MOTORSPORT**

Designed to improve handling, road feel, and steering response, 034Motorsport's Billet Adjustable Front Sway Bar End Links allow for instant transfer of suspension movement to the sway bar. These end links are also length adjustable to eliminate preload on the sway bar.

The tapered washers are not used on M-cars with aftermarket struts, or non-M cars.

Installation Spiciness Rating: MILD



Installation of your 034Motorsport Billet Adjustable Front End links is a straightforward process that will take approximately 1 hour to complete.

Supplied Parts:

- (2x) 034 Billet end link tubes
- (2x) Left-hand thread spherical heim joints with jam nuts
- (2x) Right-hand thread spherical heim joints with jam nuts
- (2x) Strut Adapters (For OE struts)
- (4x) M10 Washers
- (4x) M10 Nylock nuts
- (2x) Anti-seize Packets

Tools Needed:

- (2x) 19mm Wrenches
- 17mm Wrench
- 16mm Socket
- 5mm Allen
- Torque Wrench

About This Guide

This Install Guide documents the installation process on a E90 BMW M3. There may be minor differences depending on specific vehicle, market, options, etc.

Getting Started

Confirm you have received all the parts included with your purchase by reading the complete guide, if there are missing components, please contact:

customerservice@034motorsport.com

Assembly Steps

Step 1

Open hardware packages.



Step 2

Apply half packet of anti-seize to spherical heim joint.



Step 3

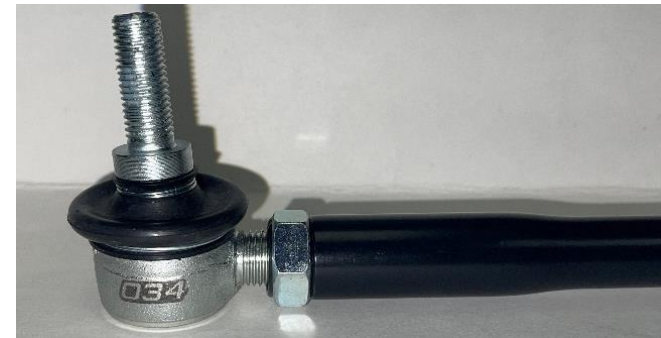
Run the jam nut down the shaft to disperse the anti-seize along the entire threaded portion.



Step 4

Install 402-Z021 into the cylindrical side of the end link.
402-Z024 into the hexagonal side of the end link.

Leave about 4 threads exposed for both.



You are now ready to start the installation process.

Install Steps

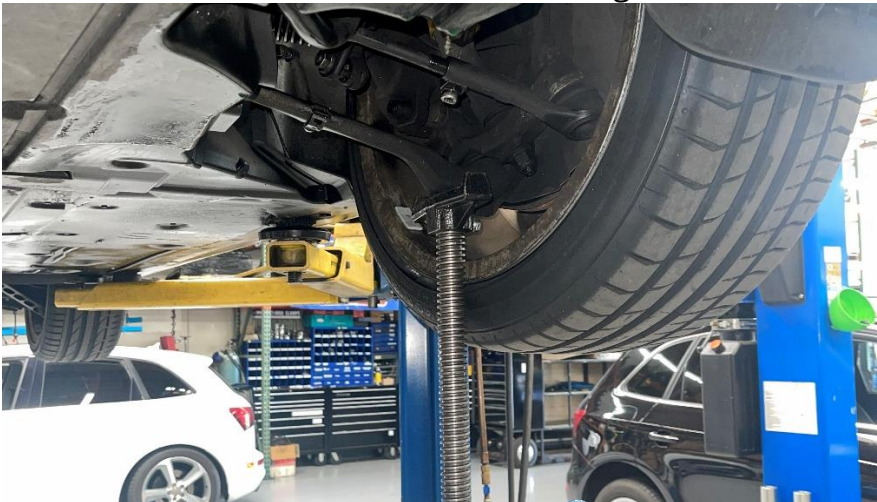
Step 1

Lift the car to access the front suspension.



Step 2

Put pole jacks under the front, lower, rear control arms, to simulate the car at ride height.



Step 3

Using a 16mm socket and 17mm wrench, remove the nut securing the end link to the front sway bar.



Step 4

Using a 16mm socket and 17mm wrench, remove the nut securing the end link to the strut housing.



Step 5

Extract the factory end link from the car.

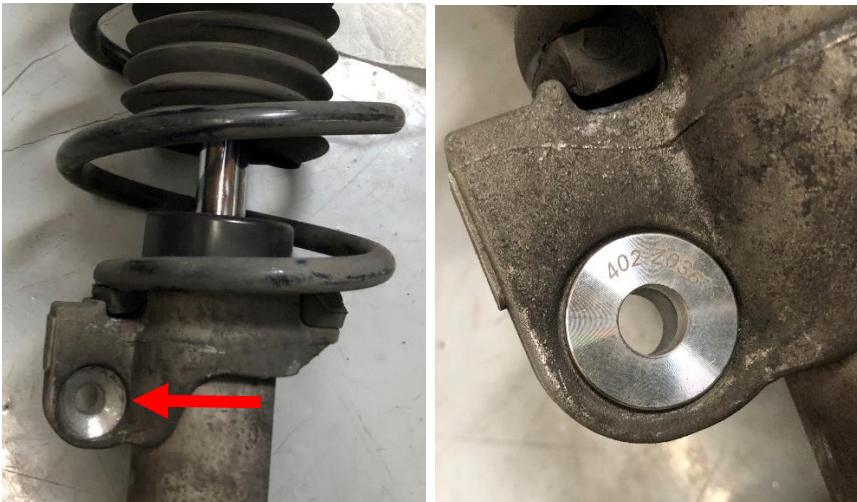
Step 6

Use the length of the stock component as a starting point for the length of the 034 adjustable end links; expand or compress as best fits your needs.



Step 7

For OEM, and some aftermarket struts, use the provided strut adapters. If your struts don't have this taper, you can move on to step 8.



Step 8

Install the 034 end link into the factory location.



Step 9

Secure the end links with the provided nylock nuts. Sandwich the washer between the strut mounting tab and the nut.



Step 10

Using a 5mm Allen wrench to prevent the heim joint from spinning, tighten the nut with a 17mm wrench.



Step 11

Use (2x) 19mm wrenches to lock the jam nuts at the desired length. (While on the car)



Step 12

Torque all of the nuts to **42Nm**.



*If you did not use pole jacks to simulate static ride-height, drop the car down to torque the hardware.

Step 13

You're done! Enjoy.

