

Motorsport Rear End Link Kit, MK1 Audi R8**034 MOTORSPORT**

Designed to improve handling, road feel, and steering response, 034Motorsport's Billet Adjustable Rear Sway Bar End Links allow for instant transfer of suspension movement to the sway bar. These end links are also length adjustable to eliminate preload on the sway bar.

**Installation Spiciness Rating: MILD**

Installation of your 034Motorsport Front End Link Kit is a straightforward process that will take approximately one hour to complete.

**Supplied Parts:**

- (2x) billet end link tubes
- (2x) right-hand thread spherical heim joints with jam nuts
- (2x) left-hand thread spherical heim joints with jam nuts
- (4x) tapered spacers
- (4x) high misalignment washers
- (2x) billet sleeves
- (2x) anti-seize packets

**Tools Needed:**

- (2x) Crescent wrenches
- 18mm wrench
- 16mm wrench
- 18mm socket
- 16mm socket
- Torque wrench

## About This Guide

This Install Guide documents the installation process on a MK1 Audi R8. There may be minor differences depending on specific vehicle, market, options, etc.

## Getting Started

Confirm you have received all the parts included with your purchase by reading the complete guide, if there are missing components, please contact:

[customerservice@034motorsport.com](mailto:customerservice@034motorsport.com)



## Assembly Steps

### **Step A**

Open hardware packages.



**Step B**

Apply half packet of anti-seize to each rod end

**Step C**

Run the jam nut down the shaft to disperse the anti-seize along the entire threaded portion





**Step D**

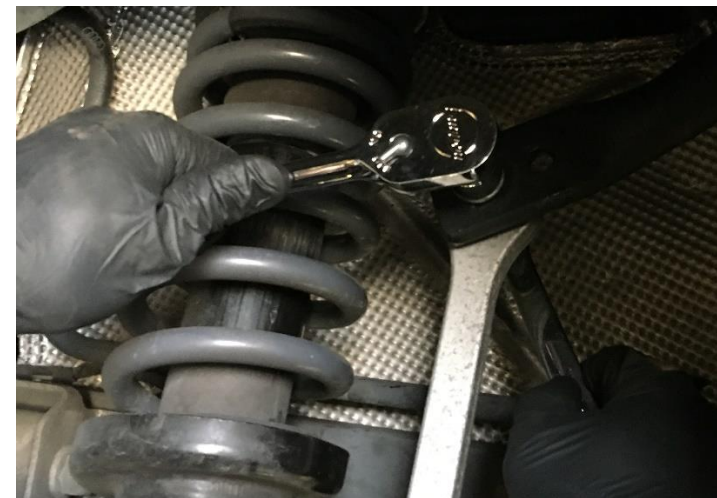
Install the right-hand threaded heim joint into the hexagonal side of the end link tube. The left-hand threaded heim joint goes into the cylindrical side of the end link tube.

**Install Steps****Step 1**

Raise the vehicle securely on jack stands, or a lift, to gain access to the front suspension.

**Step 2**

Use a 16mm socket and wrench to remove the bolt from the rear sway bar and the rear end link.



**Step 3**

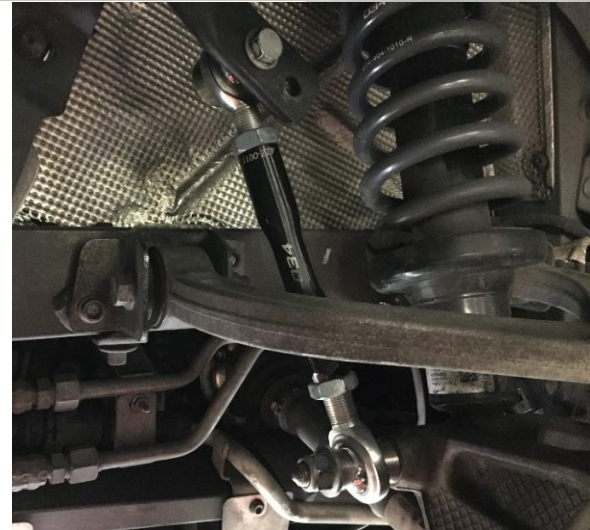
Use an 18mm socket and wrench to remove the nut from the rear lower control arm. You do not need to extract the bolt to remove the rear end link.

**Step 4**

Use the length of the stock component as a starting point for the length of the 034 adjustable front end links.

**Step 5**

Install the 034 end links with the factory hardware. The hexagonal end will receive the tapered spacers and connects to the lower control arm. Insert the sleeves into the heim joint opening at the cylindrical end and sandwich the sleeve with the high misalignment washers and secure it to **inside** the sway bar. Do not torque the bolts yet.





**Step 6**

While the car is under load, twist tube to compress or expand to desired length.

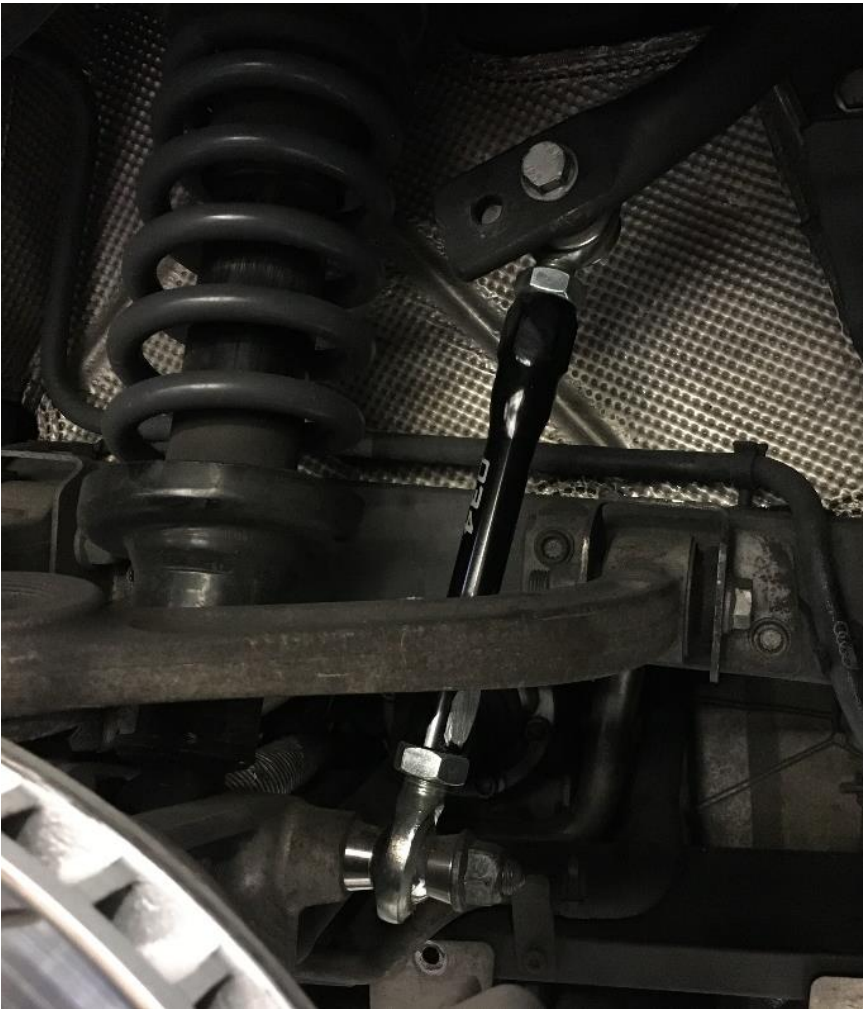
**Step 7**

Tighten lock nuts with (2) crescent wrenches.



**Step 8**

Now that all adjustments have been finalized, torque the bolt connecting to the sway bar to 60Nm. Torque the bolt connecting to the rear lower control arm to **110Nm**.

**Step 9**

Repeat steps 2-8 for the other side

**Step 10**

Enjoy your new 034 rear end links!

