

**B8/8.5 Adjustable Front Sway Bar****034 MOTORSPORT**

The 034Motorsport Solid Front Sway Bar is made from high-quality spring steel and utilizes one-piece construction for maximum rigidity. Engineered to further reduce body roll and enhance steering feel, the 034Motorsport Solid Front Sway Bar is the perfect upgrade for those seeking to positively affect turn-in feel and virtually eliminate lean under hard cornering.

**Installation Spiciness Rating: MILD**

Installation of your 034Motorsport adjustable front sway bar is a straightforward process that should take approximately 30 minutes.

**Supplied Parts:**

- 034Motorsport front sway bar
- (2x) Front sway bar bushings
- (2x) Front sway bar brackets w/ grease fittings
- (4x) M8 Nylock nuts
- (4x) M8 Washers
- (2x) Grease packets

**Tools Needed:**

- 17mm Wrench
- (2x) 16mm Wrenches
- 13mm Socket
- T30 Torx bit
- T25 Torx bit
- Phillips Screwdriver
- Torque Wrench

\*For lowered vehicles, always check all clearances over the full articulation of the suspension to identify possible interference.

## Getting Started

Confirm you have received all the parts included with your purchase by reading the complete guide, if there are missing components, please contact:

[customerservice@034motorsport.com](mailto:customerservice@034motorsport.com)

## About This Guide

This Install Guide documents the installation process on an B8 Audi A5. There may be minor differences depending on specific vehicle, market, options, etc.

## Install Steps

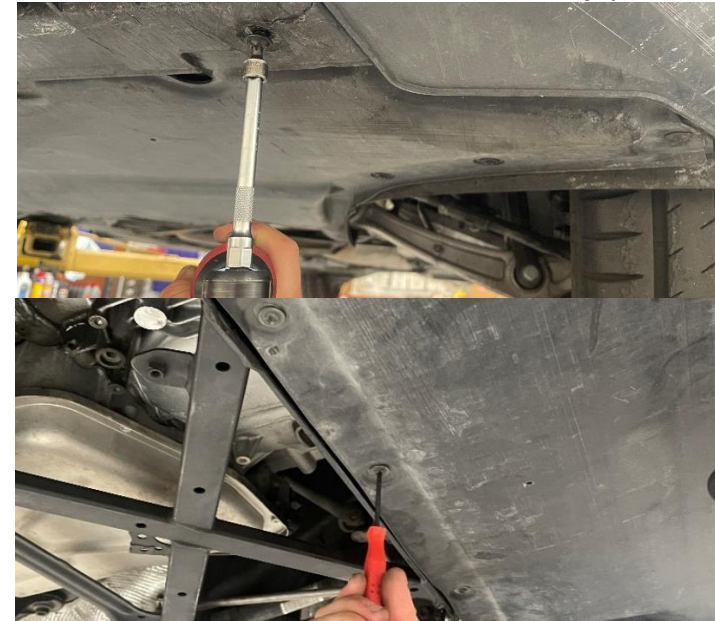
### **Step 1**

Lift the car to access the front suspension.



### **Step 2**

Using a T30 Torx, T25 Torx, and a Phillips screwdriver, remove the hardware from the belly pan.



### **Step 3**

Using (2x) 16mm wrenches, remove the lower end link hardware.





#### Step 4

Using a 13mm socket, remove the hardware for the sway bar brackets.



#### Step 5

Extract the factory sway bar.



#### Step 6

Apply 1 packet of grease to each bushing.



#### Step 7

Attach the bushings to the outside of the collars.



#### Step 8

Select your desired stiffness setting.





**Step 9**

Install the 034 front sway bar and attach it to the end links using (2x) 16mm wrenches.

**Step 10**

Using a 13mm socket, secure the sway bar and brackets to the subframe with the provided hardware.

**Step 11**

Leave the hardware snug until you can torque the end link hardware at ride height. Torque the bolts to **40Nm+90°**.

**Step 12**

Stand back and take a look at that beefy sway bar.



**Step 13**

Using a T30 Torx, T25 Torx, and a Phillips screwdriver, reinstall the hardware to the belly pan.

**Step 14**

That's it, you're done. Enjoy!

