

Sway Bar Kit, Front, E9x Non-M

E9x M / NON-M FRONT SWAY BAR



034Motorsport is proud to offer the ultimate front sway bar upgrade package for the E9x BMW 3-Series (non-M). The 034Motorsport Dynamic+ Sway Bar Kit features a front sway bar made from high-quality spring steel for maximum rigidity and durability. Designed to further reduce body roll and enhance steering feel and response. 034Motorsport's Dynamic+ Sway Bar Kit is the ideal upgrade for those in search of confidence-inspiring handling on the street and track.

Installation Spiciness Rating: MILD

Installation of your 034Motorsport Front Sway Bar Kit is a straightforward process that will take approximately one hour to complete.

Supplied Parts:

- (1x) 034Motorsport Front Sway Bar
- (2x) 034Motorsport Front Sway Bar Bushings
- (2x) 034Motorsport Sway Bar Brackets with Fittings
- (2x) 034Motorsport Front End Links
- (4x) M8 Lock Nuts
- (4x) M10 Lock Nuts
- (4x) M10 Washers
- (1x) Packet of anti-seize
- (1x) Packet of Loctite

Tools Needed:

- T27 Torx+ (Security) bit
- 16mm Socket
- 13mm Socket
- 8mm Socket
- Torque Wrench
- Zerk-style Grease Gun

About This Guide

This Install Guide documents the installation process on an E90 BMW 335D. There may be minor differences depending on specific vehicle, market, options, etc.

Getting Started

Confirm you have received all the parts included with your purchase by reading the complete guide, if there are missing components, please contact:

customerservice@034motorsport.com

Install Steps

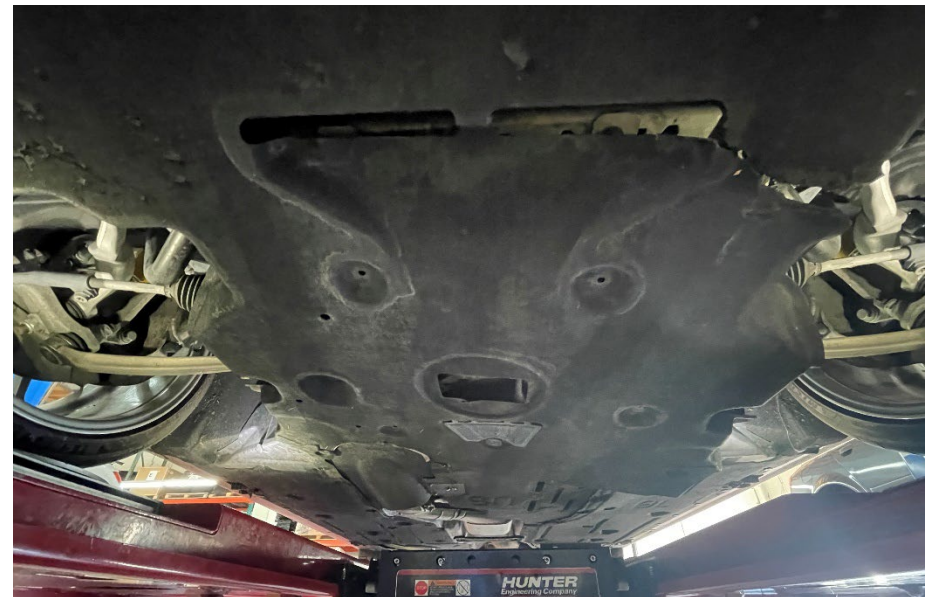
Step 1

Raise the vehicle securely to gain access to the underside.



Step 2

Using a T27 Torx+ bit and 8mm socket, remove the hardware from the belly pan.



Step 3

Using an 8mm, remove the hardware from the sway bar shrouds. There are 3 screws per side.

**Step 4**

Using a 16mm socket or wrench, remove the hardware securing the end link to the sway bar.

**Step 5**

Using a 16mm socket or wrench, remove the hardware securing the end link to the shock.

**Step 6**

Using an 8mm socket, remove the hardware securing the belly pan brackets.



Step 7

Using a 13mm socket, remove the hardware securing the sway bar brackets. Remove the stock sway bar.



Step 8

Remove the stock sway bar.

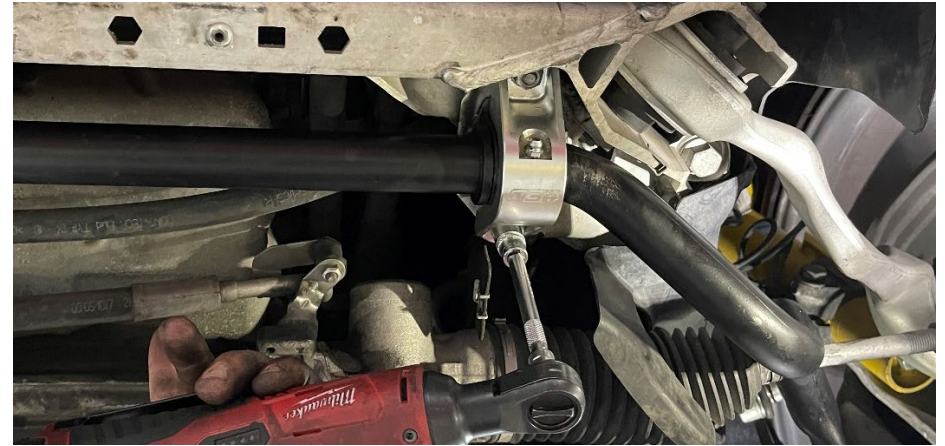
Step 9

Using a 16mm socket, install the upper end link hardware.



Step 10

Grease and install supplied 034Motorsport sway bar bushings to the sway bar, then use a 13mm socket to secure the sway bar with the billet mounting brackets.



Step 11

Torque the sway bar bracket hardware to **21Nm**.



Step 12

Using an 8mm socket, reinstall the hardware securing the belly pan brackets.



Step 13

Select your preferred stiffness setting.



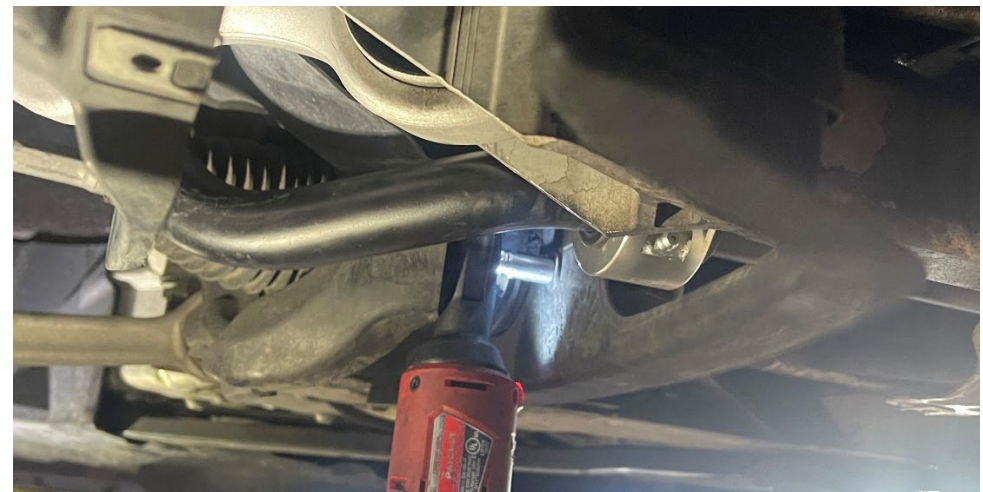
Step 14

Using a 16mm socket, install the lower end link hardware. Torque both nuts to **58Nm**.



Step 15

Using an 8mm, reinstall the hardware for the sway bar shrouds.



Step 16

Using a T27 Torx+ bit and 8mm socket, reinstall the hardware for the belly pan.

**Step 17**

Lower the car back down, and you're done. Enjoy the upgraded suspension.

