

Adjustable Rear Sway Bar, B9 Audi**034 MOTORSPORT**

034Motorsport is proud to offer the ultimate rear sway bar upgrade for the B9 Audi A4/S4, A5/S5/RS5, and Allroad! The 034Motorsport Adjustable Solid Rear Sway Bar is made from high-quality spring steel and utilizes one-piece construction for maximum rigidity and durability. Engineered to be used effectively with the stock rear sway bar, the 034Motorsport

Dynamic+ Adjustable Solid Rear Sway Bar substantially reduces body roll while greatly improving turn in and off throttle oversteer, without compromising comfort on the street.

Installation Spiciness Rating: MEDIUM

Installation of your 034Motorsport Rear Sway Bar Kit is a straightforward process that will take approximately one hour to complete.

Supplied Parts:

- (1x) 034Motorsport Rear Sway Bar
- (2x) 034Motorsport Rear Sway Bar Bushings
- (2x) 034Motorsport Rear Sway Bar Bushing Brackets
- (4x) M8 Bolts
- (4x) M8 Washers
- Grease

Tools Needed:

- (2x) 16mm Wrenches
- 16mm Socket
- 13mm Socket
- 6mm Allen Bit
- 12mm Triple-square bit
- 10mm Triple-square bit
- Torque Wrench

About This Guide

This Install Guide documents the installation process on a B9 Audi A4. There may be minor differences depending on specific vehicle, market, options, etc.

Getting Started

Confirm you have received all the parts included with your purchase by reading the complete guide, if there are missing components, please contact: customerservice@034motorsport.com

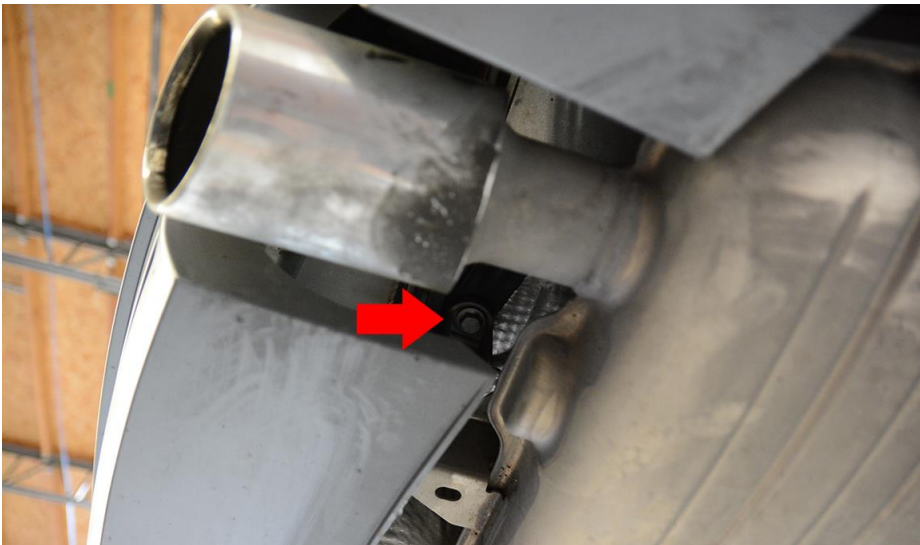
Install Steps

Step 1

Raise the vehicle securely on jack stands, or a lift, to gain access to the rear suspension.

Step 2

Remove the bolts securing the exhaust hangers to the vehicle. This will allow the exhaust to sag slightly and give you more room to remove the rear sway bar from the vehicle.



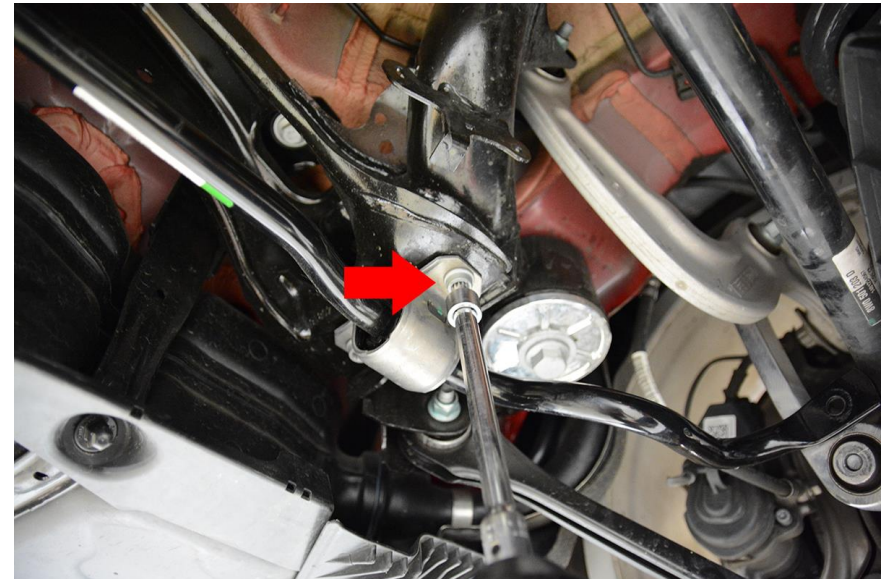
Step 3

Remove the rear sway bar end link bolts and nuts, detaching the rear sway bar end links from the rear sway bar.



Step 4

Remove the triple square bolts securing the factory sway bar mounting brackets to the rear subframe.

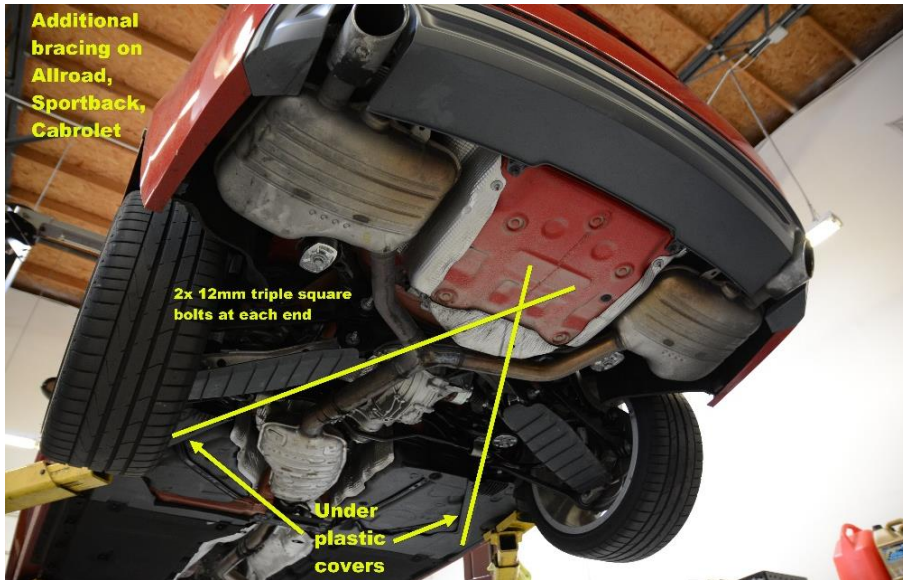


Step 5 (Optional)

For Allroad, Sportback, & Cabriolet owners, remove the reinforcing cross members.

It is recommended to replace these bolts after removal.

The OE part # is N 107 486 01.



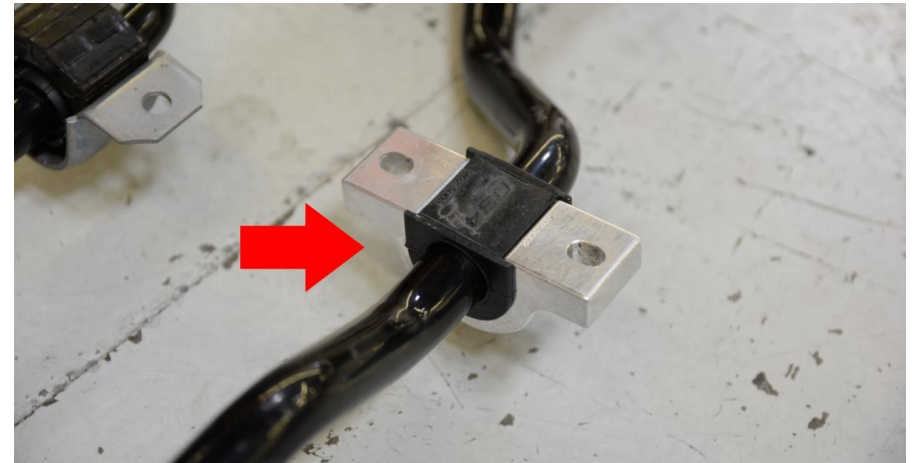
Step 6

With the sway bar brackets and end links removed, snake out the rear sway bar from underneath the vehicle.



Step 7

After applying the supplied grease on the inside of the bushings, install the polyurethane sway bar bushings and billet aluminum brackets onto the bar as shown.



Step 8

Install the 034 Rear Sway Bar in the same orientation as the factory bar, placing the supplied Sway Bar Bushing Backing Plates between the bushing/bracket and subframe.



Step 9

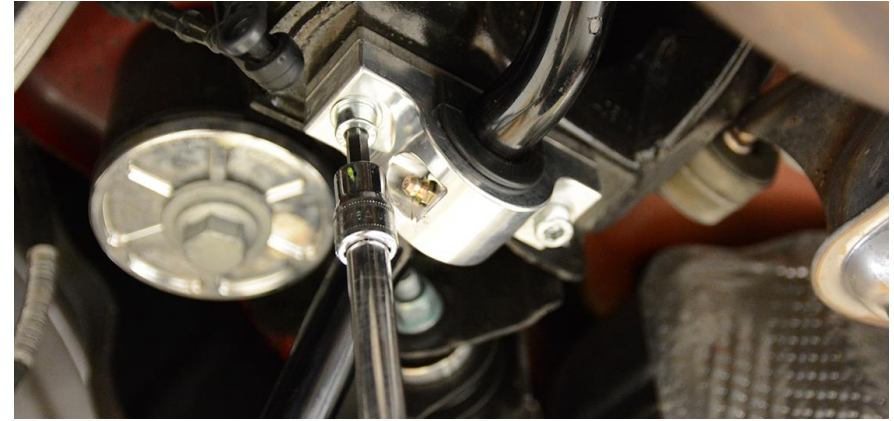
Snug up the supplied Sway Bar Bracket hardware, but do not tighten fully.

**Step 10**

Attach the sway bar end links to the 034 Rear Sway Bar using the factory hardware, but do not tighten fully. **Compress suspension to static ride height.** Torque end link hardware to **40 Nm + 180°**.

**Step 11**

Torque the sway bar mount bracket bolts to **28 Nm**.

**Step 12**

Raise the exhaust and reinstall the exhaust hanger bolts you removed in Step 1.

**Step 13 (Optional)**

Reinstall the reinforcing cross members removed in Step 5 (Allroad, Sportback, Cabriolet). Torque to **50Nm + 90°**

Step 14

After ensuring all hardware is tight, lower the vehicle.

Step 15

You're done. Enjoy the upgraded handling!

