

B8/8.5 ADJUSTABLE REAR SWAY BAR**034 MOTORSPORT**

034Motorsport is proud to offer the ultimate rear sway bar upgrade for the B8/B8.5 Audi A4/S4/RS4 and A5/S5/RS5! The 034Motorsport Adjustable Solid Rear Sway Bar is made from high-quality spring steel and utilizes one-piece construction for maximum rigidity. Engineered to be used effectively with the stock front sway bar, the 034Motorsport Adjustable Solid Rear Sway Bar substantially reduces body roll while greatly improving turn in and off throttle oversteer, without compromising comfort on the street.

Installation Spiciness Rating: MEDIUM



Installation of your 034Motorsport Adjustable Rear Sway Bar is a straightforward process that will take approximately 2 hours to complete.

Supplied Parts:

- 034Motorsport B8/B8.5 Adjustable Rear Sway Bar
- (2x) 034Motorsport Rear Sway Bar Brackets
- (2x) Polyurethane Bushings
- (4x) M8x35mm bolts
- (4x) M8 washers
- Grease packet

Tools Needed:

- 17mm wrench (if using 034 rear end links)
- (2x) 16mm wrenches
- 16mm socket
- 13mm socket
- 10mm triple-square socket
- 6mm Allen bit
- Torque wrench
- Various extensions
- Swivel socket adapter

***We recommend replacing the factory end link bolts as they are torque-to-yield bolts**

Getting Started

Confirm you have received all the parts included with your purchase by reading the complete guide, if there are missing components, please contact:

customerservice@034motorsport.com

About This Guide

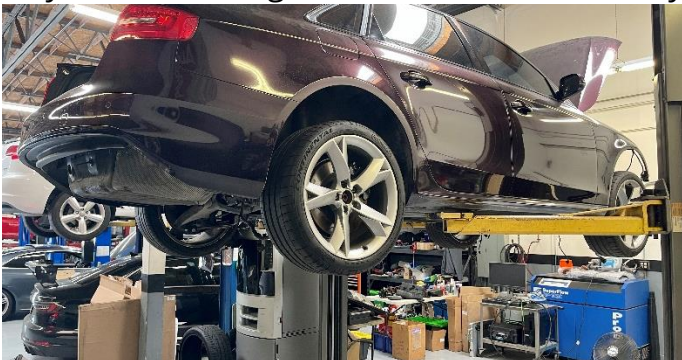
This Install Guide documents the installation process on a B8 Audi S4. There may be minor differences depending on specific vehicle, market, options, etc.

***For lowered vehicles, always check all clearances over the full articulation of the suspension to identify possible interference. We recommend running 034Motorsport suspension components, as they have been designed and tested to work together, without interference.**

Install Steps

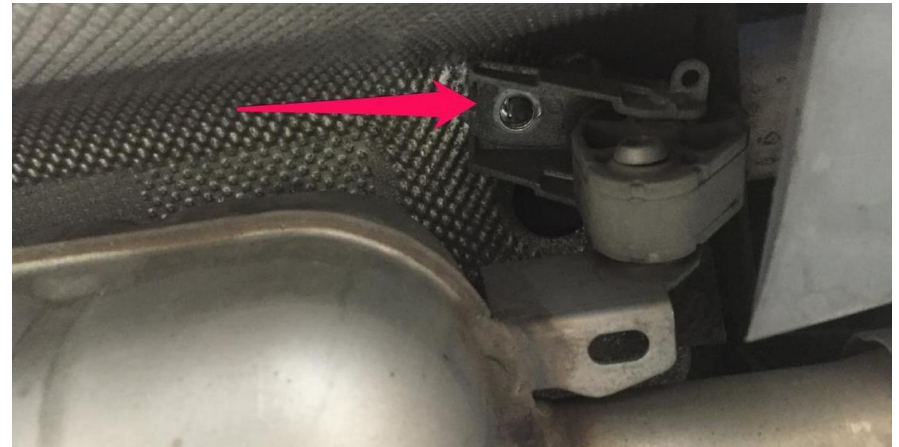
Step 1

Securely lift the car to gain access to the rear sway bar.



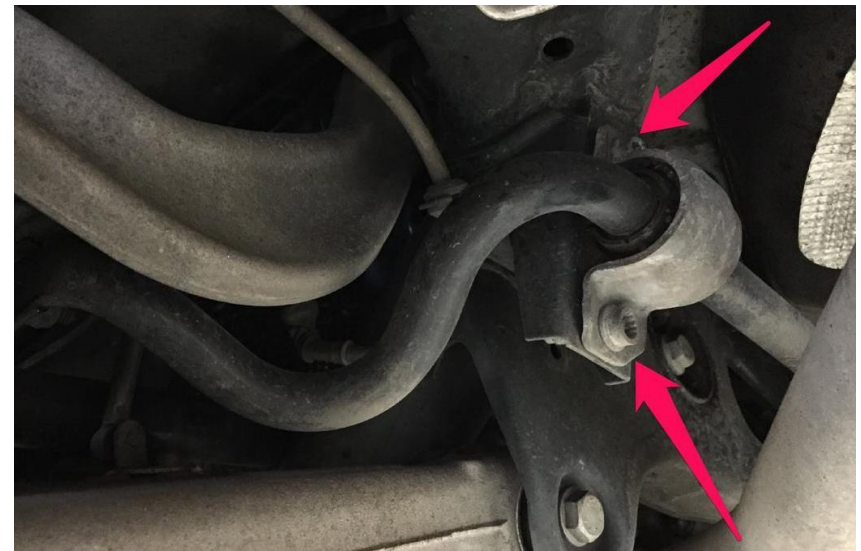
Step 2

Using a 13mm socket and extension, remove the nuts securing the exhaust hangers to the vehicle. This will allow the exhaust to sag slightly and provide extra clearance.



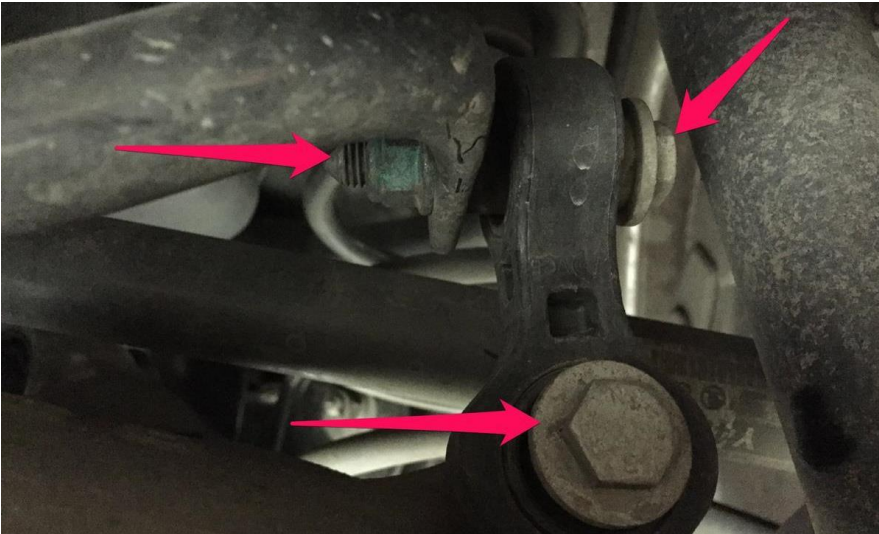
Step 3

Remove the triple square bolts securing the factory sway bar mounting brackets to the rear subframe.



Step 4

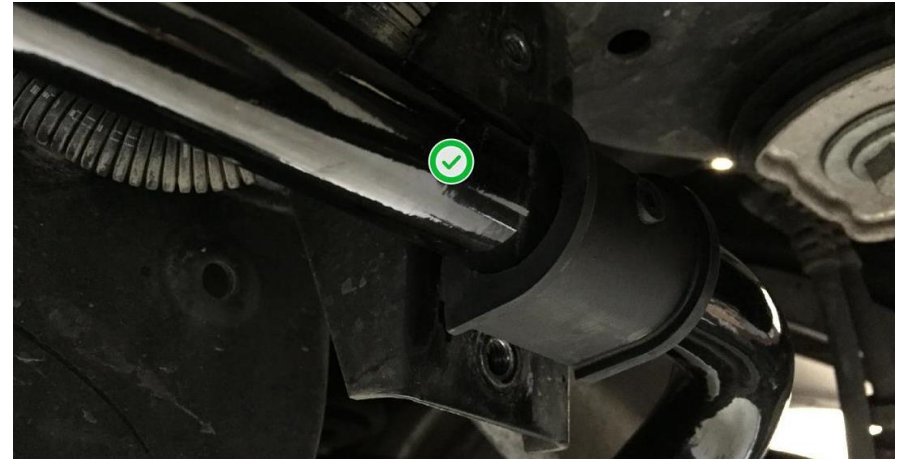
Using the 16mm wrenches, remove the rear end link hardware and set the rear end links aside. With the end links removed, snake out the rear sway bar.

**Step 5**

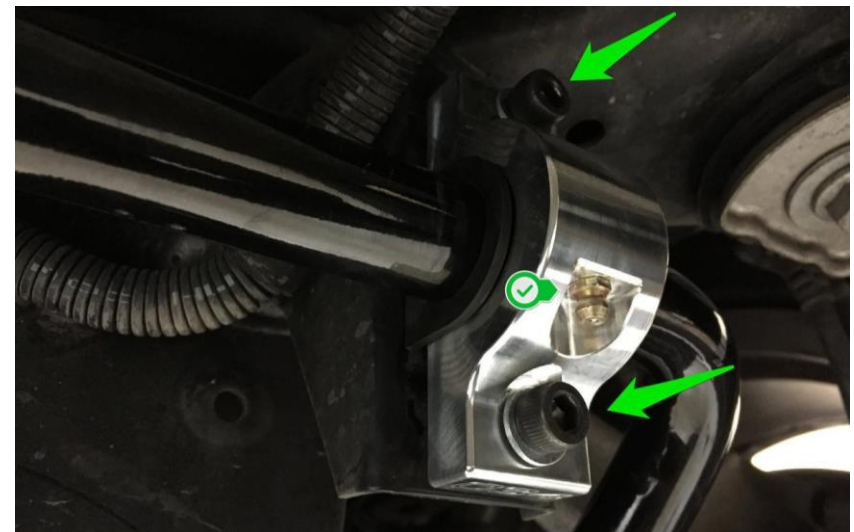
Put the 034 rear sway bar into position, matching the orientation of the factory bar. Loosely attach the end links.

**Step 6**

After applying the supplied grease, install the polyurethane sway bar bushings onto the bar as shown.

**Step 7**

Loosely secure the 034 sway bar brackets with the supplied washers and bolts, ensuring that the grease fittings are in the correct orientation. (Pointing down)



Step 8

Lower the vehicle onto the ground or ramps to compress the rear suspension.



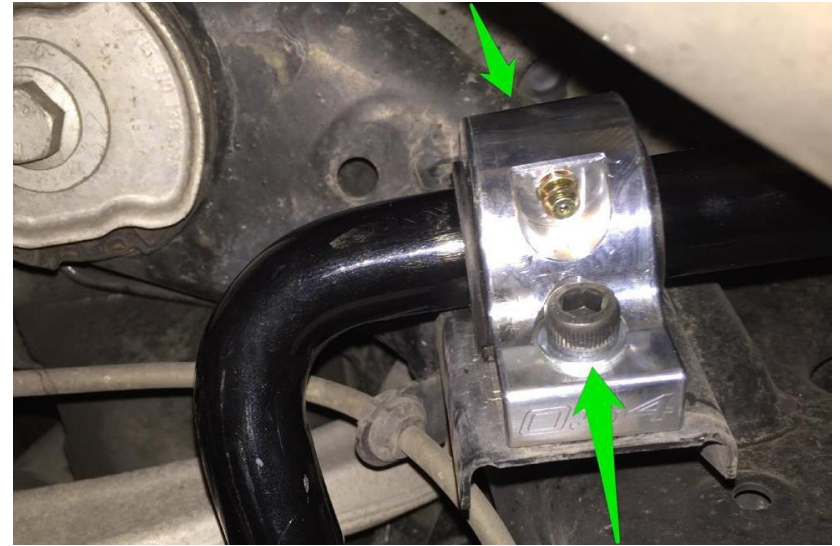
Step 9

Torque the sway bar end link hardware to **40Nm + 90***.



Step 10

Tighten the sway bar mount bracket bolts to **28Nm**.



Step 11

Raise the exhaust and reinstall the exhaust hanger nuts you removed in Step 2. Check all hardware to ensure that everything is tight. You're done!

