

Spherical MQB Rear Trailing Arm Kit, MkVII Volkswagen  
Golf/GTI/R & 8V/8S Audi A3/S3 & TT/TTS

**034 MOTORSPORT**

034Motorsport's Performance Rear Trailing Arm Kit with Spherical Bearings ensuring precise handling, and confidence-inspiring road feel by replacing the factory rear trailing arms to allow for proper suspension articulation without any deflection. This bolt-in kit replaces the stock rubber rear trailing arm bushings on Volkswagen & Audi MQB and MQB EVO vehicles with motorsport-quality Aurora Spherical Bearings. Unlike polyurethane bushings, spherical bearings allow for full suspension articulation without binding, while eliminating slop from bushing flex.

**Installation Spiciness Rating: MEDIUM**



Installation of your 034 Rear Trailing Arm Kit is a straightforward process that takes approximately two hours to complete.

**Supplied Parts:**

- (2x) 034 Rear Trailing Arms
- (4x) Spacers

**Tools Needed:**

- 18mm Wrench
- 18mm Socket
- 16mm Socket
- 13mm Socket
- 14mm Triple Square Bit
- Hammer
- Punch
- Pliers
- Torque Wrench

Getting Started

Confirm you have received all the parts included with your purchase by reading the complete guide, if there are missing components, please contact:

[customerservice@034motorsport.com](mailto:customerservice@034motorsport.com)

## About This Guide

This Install Guide documents the installation process on a Mk7 VW GTI. There may be minor differences depending on specific vehicle, market, options, etc.

## Install Steps

### **Step 1**

Raise the vehicle securely on jack stands or a lift to access to the rear suspension.

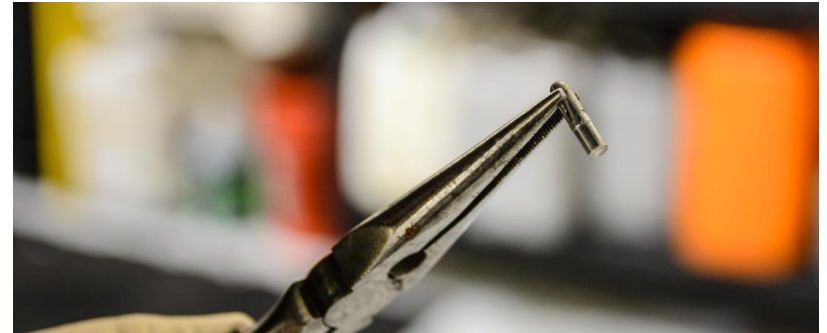
### **Step 2**

Using a hammer and punch, push the pin securing the brake line bracket toward the outer edge of the car.



### **Step 3**

With pliers, remove the pin the rest of the way from the hardware retaining the plastic brake line bracket to the trailing arm. The pin should be free and look as the image below. Do not lose this pin, as it will be needed for installation.



### **Step 4**

Using needle nose pliers from the outer edge of the car, squeeze the 4 lobes of the retainer together so it will fit through the hole in the trailing arm.



## Step 5

From underneath the car, the brake line bracket should look as below. With pliers (and a flathead screwdriver if needed) remove the metal retainer out of the trailing arm and plastic bracket.



## Step 6

The metal retainer should be free from the car. Put this to the side but keep track of this piece as it will be needed for installation.



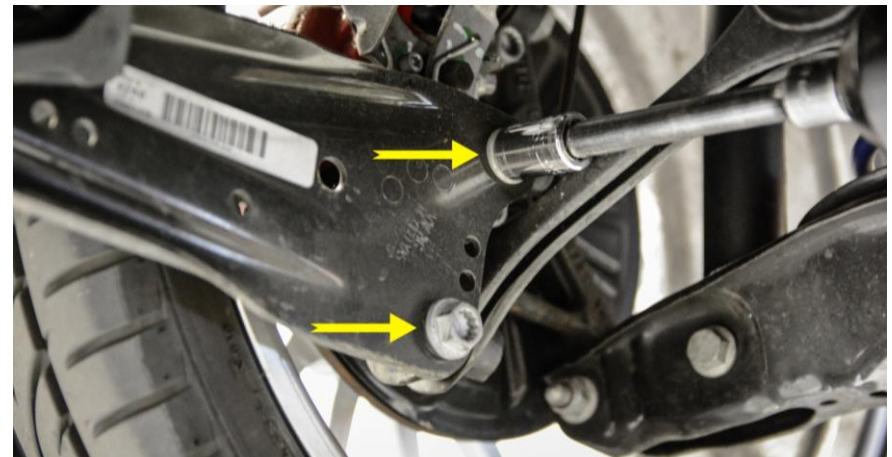
## Step 7

Now the plastic brake line bracket should be free from the trailing arm.



## Step 8

Using an 18mm Socket (or 14mm Triple Square), loosen and remove the hardware securing the trailing arm to the rear hub. Keep these bolts, as they will be needed during installation of the new arms.



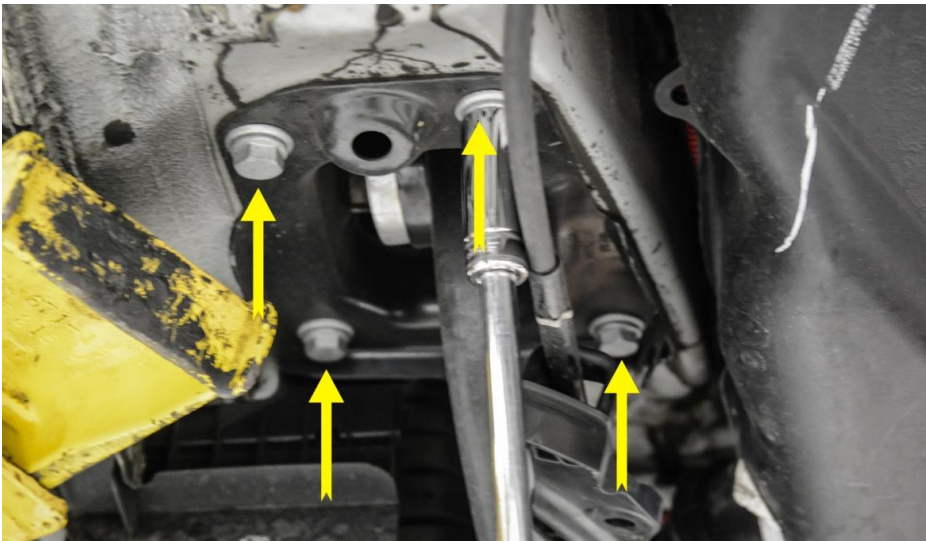


**Step 9**

The trailing arm should be free from the rear hub now.

**Step 10**

Locate the 4 bolts securing the front of the trailing arm to the chassis. Remove the four M10 bolts with a 16mm socket.

**Step 11**

The trailing arm should be completely free from the chassis now. Carefully remove from the car, making sure not to pull on the brake line at all.

**Step 12**

Using an 18mm socket, loosen and remove the M12 bolt securing the trailing arm to the chassis mounting plate.



**Step 13**

Align the 034Motorsport Spherical Trailing Arm so that the logo faces toward the inside (or center) of the car. (This should be the same side as the welded nut and cable hook on the chassis mounting plate)

**Step 14**

Insert the trailing arm into the chassis mounting plate and secure with the factory M12 bolt.

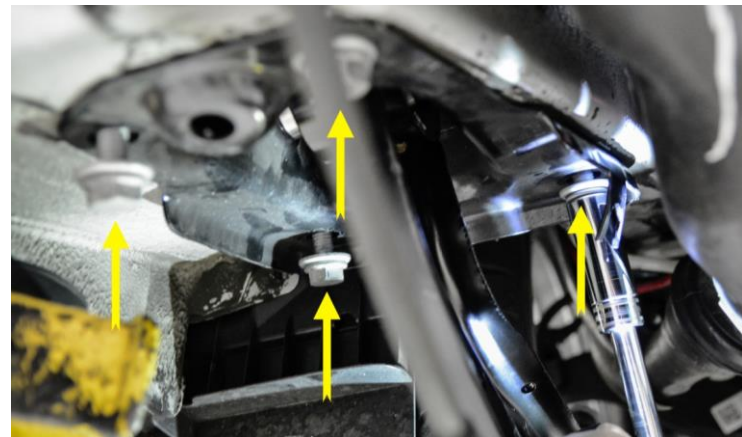
**Step 15**

Torque factory bolt to **90 Nm + 90 °**.

**Hint:** Use a vice to secure the trailing arm mounting plate for proper torque application.

**Step 16**

Align the chassis mounting plate with the holes in the chassis. Reinstall the four M10 factory bolts using a 16mm socket.



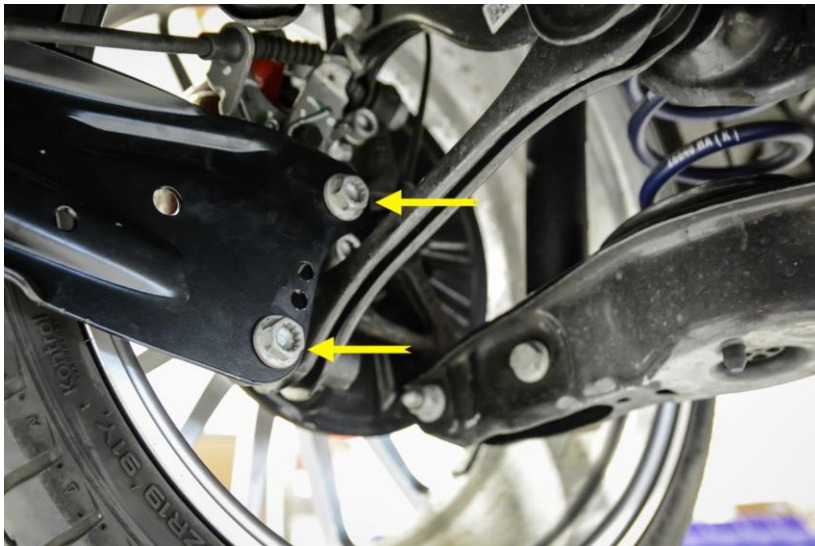


**Step 17**

Torque the M10 chassis mounting bolts to **50 Nm + 45 °**.

**Step 18**

Align the rear of the trailing arm with the hub assembly and reinstall the two M12 factory bolts using a 14mm Triple Square or 18mm Socket. Torque to **90 Nm + 45 °**.

**Step 19**

Slide the plastic brake line bracket back into place, aligning the center hole with the hole in the trailing arm.

**Step 20**

Insert the metal retainer into the plastic bracket and through the hole in the trailing arm. **Hint:** Some light filing may need to be done to the lobes of the retainer to reinstall through trailing arm hole.



**Step 21**

Using a hammer, ensure metal retainer is fully set through plastic bracket and into metal trailing arm.

**Step 22**

With a hammer and punch, tap the securing pin into metal retainer.

**Step 23**

Press the pin far enough into retainer so that the head sits flush with head of the retainer.

**Step 24**

Double check that all bolts have been properly torqued, and the brake line has been properly reattached to new 034Motorsport Spherical Rear Trailing Arm. Repeat the process for the other side of the vehicle, and then you are done. Enjoy!