

Carbon Fiber Battery Cover**034 MOTOR
SPORT**

This allows for a better fit on the small Mk7 GTI battery option. This modification is also necessary for cars with the small battery that wish to run the 034-108-1044 intake with the battery cover.

Installation Spiciness Rating: MEDIUM

Modification of your 034Motorsport Carbon Fiber Battery Cover is a straightforward process that will take approximately 30 minutes to complete.

Tools Needed:

- Handheld rotary tool
- Cut-off wheel
- Barrel Sander
- Measuring Tape/Ruler
- Scissors
- Paint pen or similar
- Masking tape
- PPE

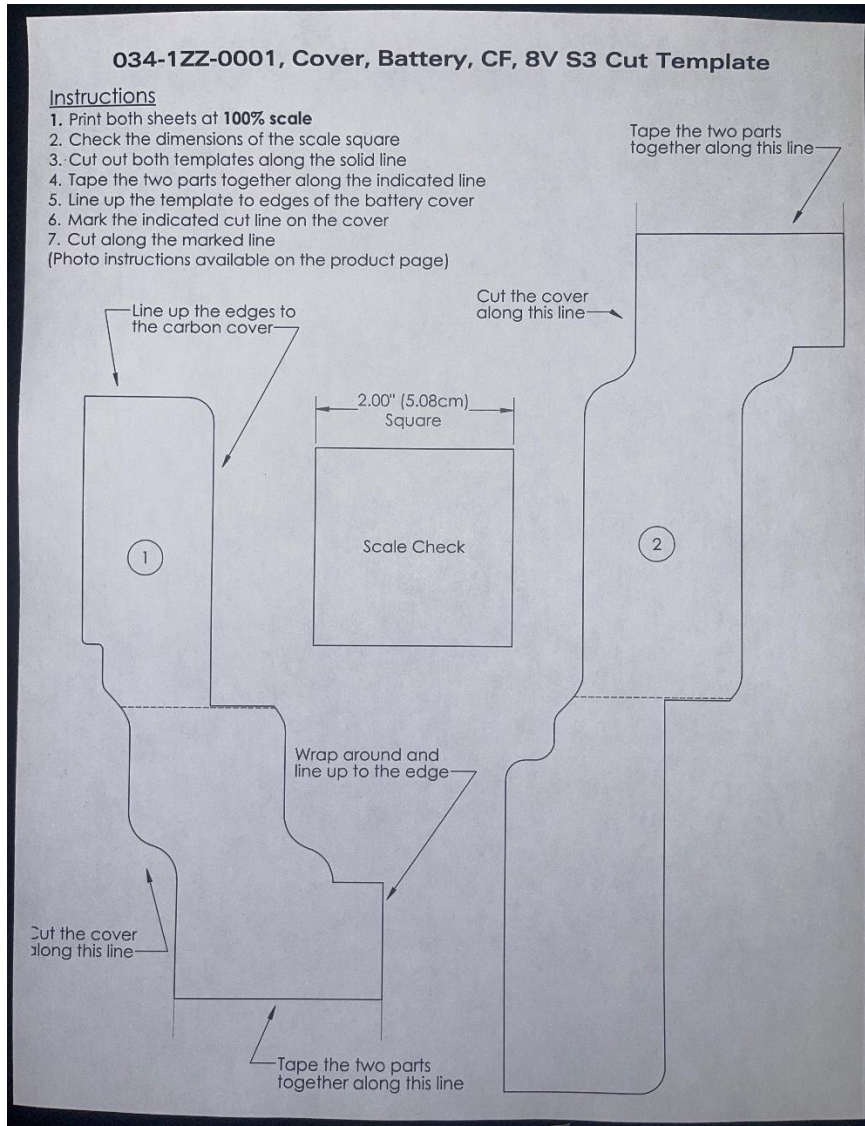
Caution!

Trimming Carbon Fiber can be a nasty business. Be sure to cover any exposed skin, as well as wearing sufficient eye protection, a face mask, and gloves. This stuff can cause skin irritation and is very bad to breathe in. We felt this job required a medium difficulty rating due to the risks involved and the irreversible nature of over-trimming. Please be careful.

Modification Steps

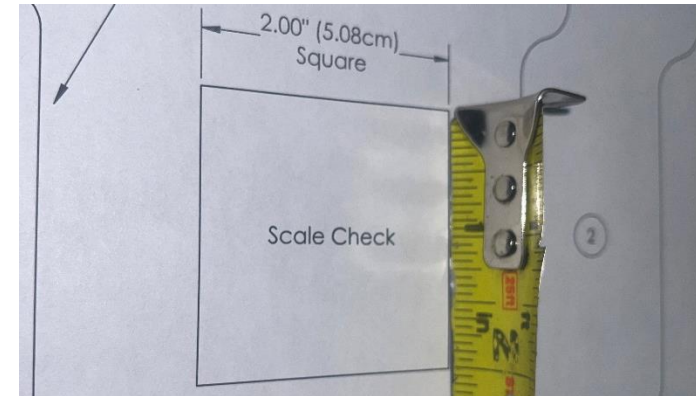
Step 1

Print out your cut template.



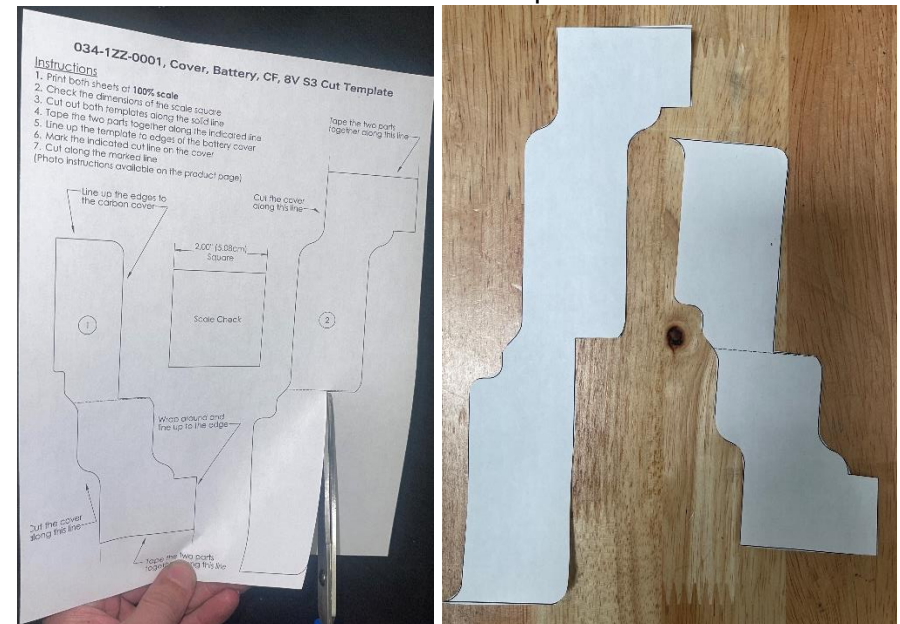
Step 2

Using a tape measure/ruler, confirm that the scaling is correct.



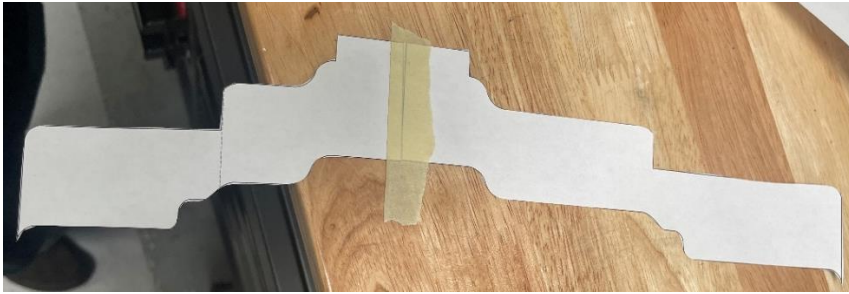
Step 3

Cut out the template.

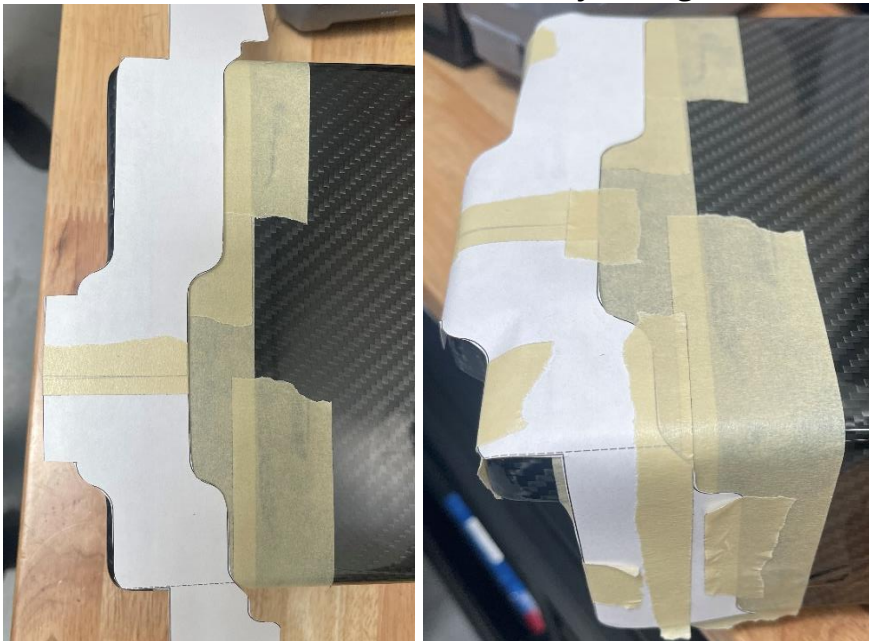


Step 4

Tape the two pieces together, along the flat edges with the sharp 90° corners.

**Step 5**

Place the template over the rear of the battery cover. Align the edges of the template to the edges of the cover. We chose to lay some tape under the template to help with adhesion and to minimize frayed edges.

**Step 6**

Trace the template if you decide to remove it before cutting.

**Step 7**

Using a rotary cutting wheel, carefully start trimming.



Step 8

Use a barrel sander to clean up the rough edges as well as the inner radii.

**Step 9**

Remove the tape and template. Give the cover a quick rinse.

**Step 10**

Using a tape measure, determine the distance of the magnets from the uncut, forward-facing wall of the cover.



Step 11

Now that you know where the magnets are, measure that same distance on the cloth battery cover, from the front of the battery. Center the provided metal plate at that distance, such that the plate spans the width of the battery. Ours was about 5 ¾".

**Step 12**

Using a paint pen or similar, mark the position of the holes on the plate onto the cloth battery cover.

**Step 13**

Set the metal plate aside and pull the cover away from the battery to safely poke or cut small holes where you made your marks.



Step 14

Position the metal plate over the holes in the cloth cover and secure it with the provided plastic rivets.

**Step 15**

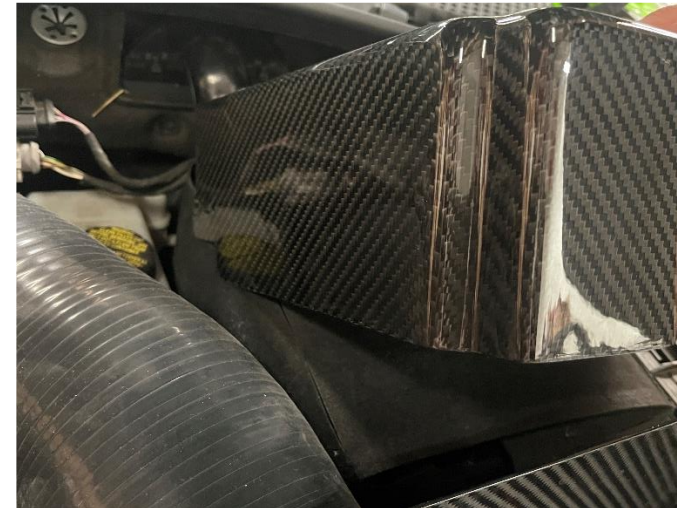
Trim the excess tails from the plastic rivets.

**Step 16**

Fold the top of the cloth cover back into position.

**Step 17**

Slide the carbon fiber battery cover, cut end first, towards the windshield.



Step 18

The magnets on the carbon fiber cover should engage with the metal plate on the cloth cover. Wipe it down and you are done.
Enjoy!

