

MQB Carbon Fiber Heat Shield**034 MOTOR SPORT**

034Motorsport's engineers thoroughly evaluated the factory airbox design to create a performance replacement that reduces pressure drop in the intake tract, while offering OEM+ fit and finish. The result is this complete one-piece MQB Carbon Fiber Air Intake Upgrade, which offers 100% bolt-on installation without the need for any additional pieces.

**Installation Spiciness Rating: MILD**

Installation of your 034Motorsport Open Top Intake is a straightforward process that will take approximately one hour to complete.

**Supplied Parts:**

- S34 Carbon Fiber Heat Shield with Rubber Stripping and Grommet
- 034 4" Inlet Silicone Hose with Barbed Fitting
- 034 4" Air Filter and Hose Clamp
- Metal 4" Adapter with Hardware
- Metal Mounting Bracket for Intake Hose with Hardware
- 034 SAI Air filter
- Billet Aluminum SAI adapter with Hardware
- Top hood seal
- (3x) OEM style rubber mounting feet

**Tools Needed:**

- 10mm wrench
- 8mm wrench
- 7mm socket or flat-head screwdriver
- 5mm Allen
- 4mm Allen

**\*Be sure to clean out any intake related components to remove any possible contaminants.**

### About This Guide

This Install Guide documents the installation process on a MK7 VW GTI. There may be minor differences depending on specific vehicle, market, options, etc.

### Getting Started

Confirm you have received all the parts included with your purchase by reading the complete guide, if there are missing components, please contact: [customerservice@034motorsport.com](mailto:customerservice@034motorsport.com)

## Install Steps

### Step 1

Open the hood to gain access to the intake system.



### Step 2

Remove the engine cover by gently pulling up.



### Step 3

Use a 7mm socket or flat head screwdriver to release hose clamp on factory intake hose.





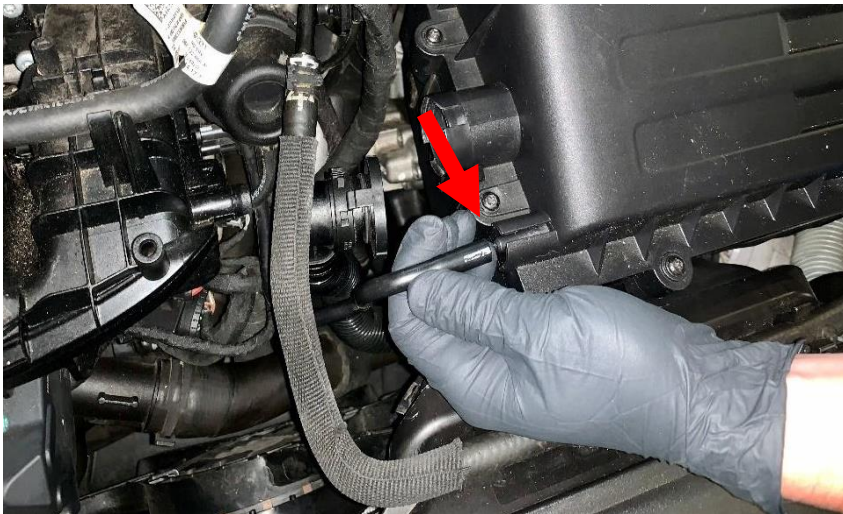
#### Step 4

Squeeze the sides of the SAI to remove from factory airbox.



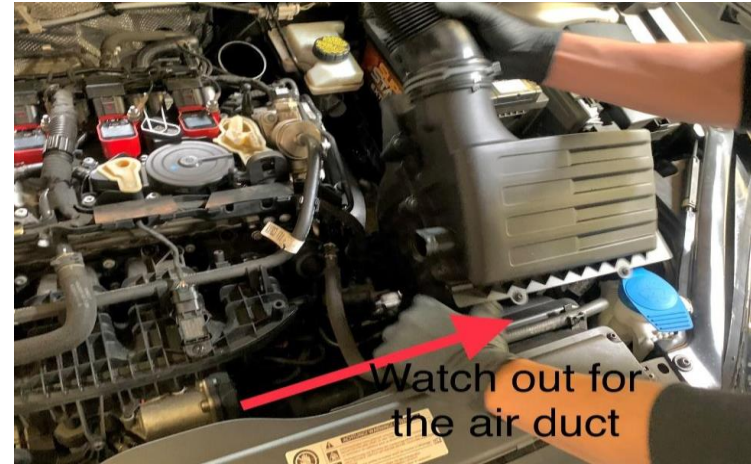
#### Step 5

Remove the vacuum line by pulling away from airbox.



#### Step 6

To remove the factory airbox, firmly pull up to release the grommets from their posts. You will need to rotate the box to remove it as the box will catch on the lip of the air duct.



#### Step 7

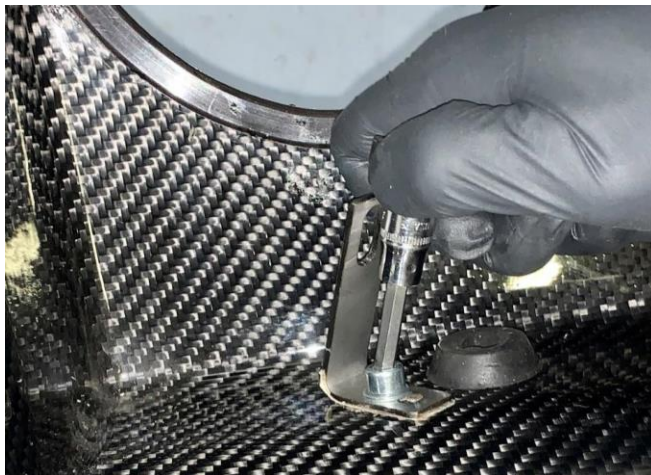
Install provided mounting feet.





**Step 7 cont.****Step 8**

Using a 5mm Allen, install air filter support bracket. Leave hand tight so you can adjust it later.

**Step 9**

Secure the SAI adapter to the S34 heat shield using an 8mm wrench and 4mm Allen.

**Step 10**

Using a 5mm Allen, mate the air filter support coupler to the support bracket. Leave hand tight so you can adjust it later.





### Step 11

Insert silicone hose into S34 heat shield.



### Step 12

Slide appropriate hose clamp near logo on silicone hose and slide the hose over the air filter coupler.



### Step 13

Push the S34 heat shield down onto mounting pins.



### Step 14

Reuse factory hose clamp with a 7mm socket to secure silicone hose to turbo inlet.



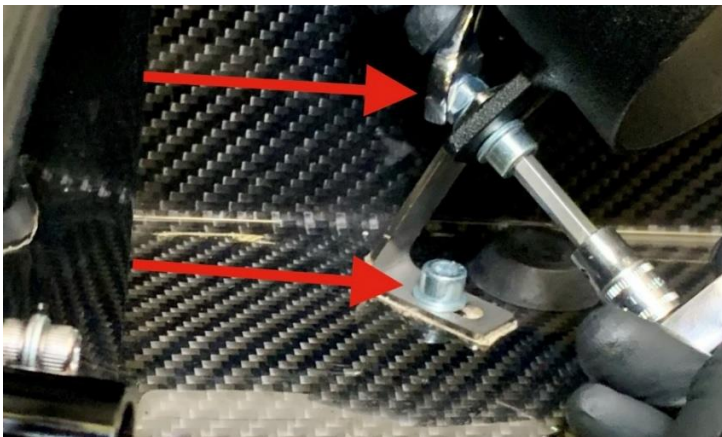


**Step 15**

Tighten hose clamp mating the silicone hose and air filter support coupler.

**Step 16**

Tighten hardware mating the air filter coupler to the support bracket, and the air filter support bracket to the S34 heat shield.

**Step 17**

Slide hose clamp over the 034 air filter and install assembly onto the air filter coupler and tighten the hose clamp.

**Step 18**

Install 0.75" SAI filter onto the adapter and tighten the hose clamp.





**Step 19**

Push SAI harness onto the backside of the SAI adapter.

**Step 20**

Insert vacuum nipple adapter into the vacuum line and install into the provision on the silicone hose.

**Step 21 (optional)**

For an airtight seal, add the rubber hood gasket to the top perimeter of the S34 heat shield.

\*This may leave a small crease in the under-hood padding. This is a good thing! It is making contact and ensuring a solid seal.

**Step 22**

Return the engine cover back into place and enjoy!

